



— GILCO —  
**PARKHILLS**

AIRPORT ROAD, MOHALI



## GILLCO - AN AWARD WINNING DEVELOPER

Perched atop a strong foundation of trust and admiration, Gillco Group shares an expensive and strenuous profession of providing people with homes of their dreams. Homes that sail past the contemporary norms of luxury and opulence and showcase beautifully contrived elements to address every moment of your esteemed lives.

Gillco Valley, Sector 127 & 115, Mohali, is a large township project on 450 acres of prime land where every moment has a fresh breath of ingenuity and felicity. Unique in many aspects, the township offers choices, qualities and value for money. planning has led to execution. And a large number of families have already moved in, living happily in the township.

Gillco Group has been adjudged "Builders of the Year" time and again by leading media houses The Hindustan Times and India Today Group.



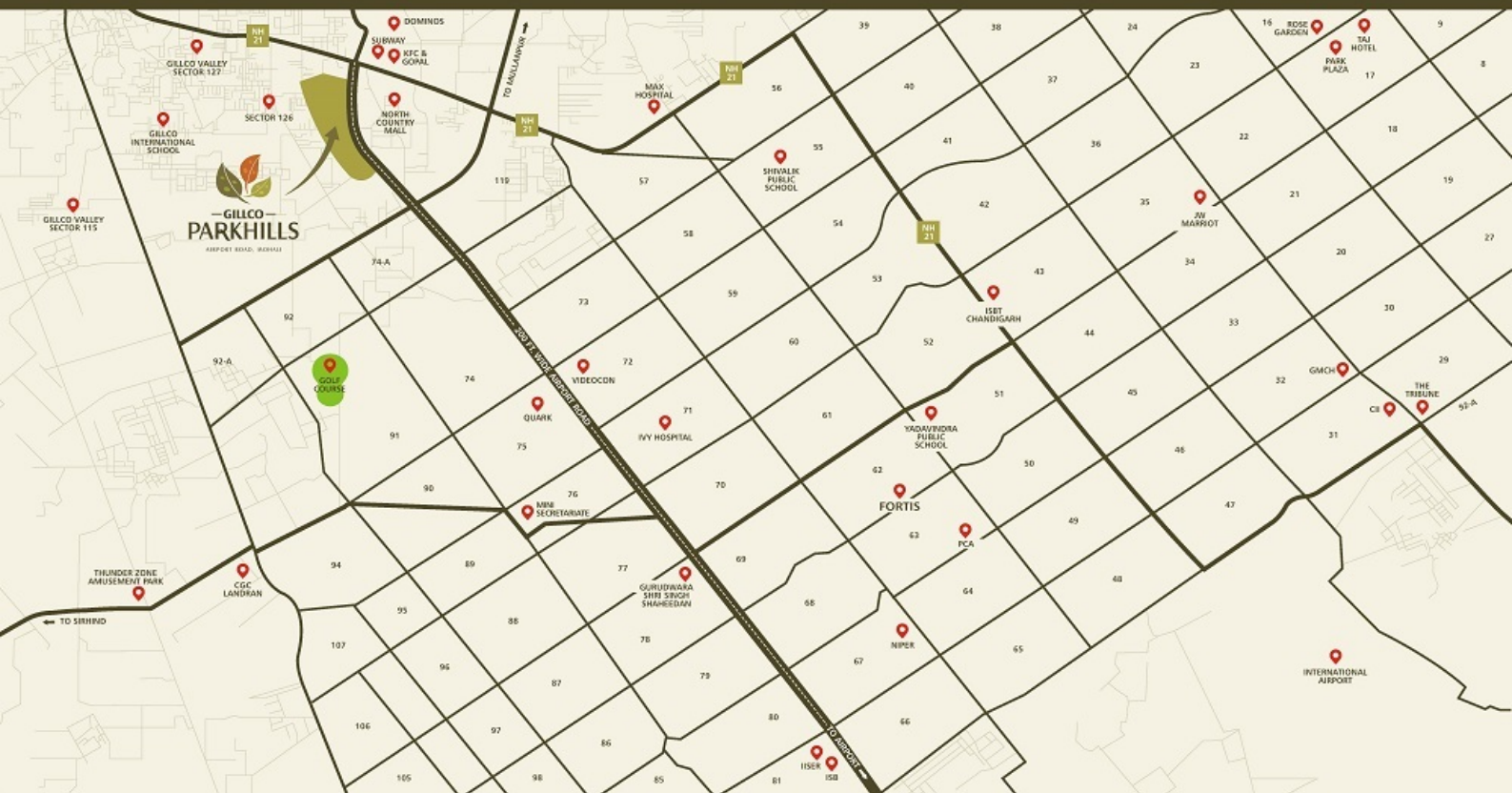
**BUILDER OF THE YEAR**  
2006, 2007, 2008, 2009, 2010  
Awarded by Hindustan Times



**INDIA TODAY**  
BUSINESS WIZARDS, NORTH  
Awarded by CM, Punjab

Anything Special is born out of being better, greater, or otherwise different from what is usual. While the usual takes a backseat, Gilco Parkhills rises high into the skies of Mohali, a city increasingly becoming the focus of industrial, education, healthcare and real estate projects. It is no longer a sidekick to Chandigarh and in fact has transitioned from a slow paced town to an ultra uber city. We at Gilco Parkhills are excited to be amid the excitement and noteworthy progress of Mohali. Our high rise apartments are located close to the new Airport road and the new International airport at Mohali is minutes away. Being conveniently connected not just to the New airport but also to the city's major hospitals, colleges and North Country Mall, a premier shopping & entertainment destination, makes Gilco Palm Hills indeed something special.

## CREATING SOMETHING SPECIAL



# MOVE TO AN ENRICHED LIFE



## Robust 1 km Frontage

No other residential address in the city can boast of the robust 1 km frontage because of the fact that Gilco ParkHills is situated right beside the 200 Ft. wide Airport road, giving it a strategic location advantage. Travelling to the International Airport at Mohali would be an easy breeze and will also ensure a smoother connectivity to Chandigarh and the neighboring landmarks.



## Neighborhood Conveniences

There is nothing more important than a convenient and an easy life. Everywhere you look, you desire convenience. Gilco ParkHills is located strategically in the heart of Mohali and is well connected to North Country Mall where you can shop your heart out, enjoy your favorite movies and do much more. The airport and the major hospitals like Fortis, MAX are minutes away. There are plenty of options of world class schools and colleges as well.



## Compelling Outdoors

Every element of architecture has been meticulously designed to exude style. With a perfect blend of beautiful architecture and the lush green lawns, magnificent landscapes, flowers and trees complemented by chirping sounds of birds, our high rise towers offer a breathtaking view of the Shivalik Hills and your heart will just swell with awe at the stupendous view of the city below.



## Stylish & Functional Interiors

Style is what defines Gilco ParkHills, every space at our high rise towers has been designed and created for a style appeal and a functional use. The use of space has been maximized and the beautiful finishing to the floors and wooden elements will make your home stand out. Get a sense of clutter free, well ventilated and brightly lit home at the Gilco ParkHills where beautiful interiors and functional spaces take center stage.





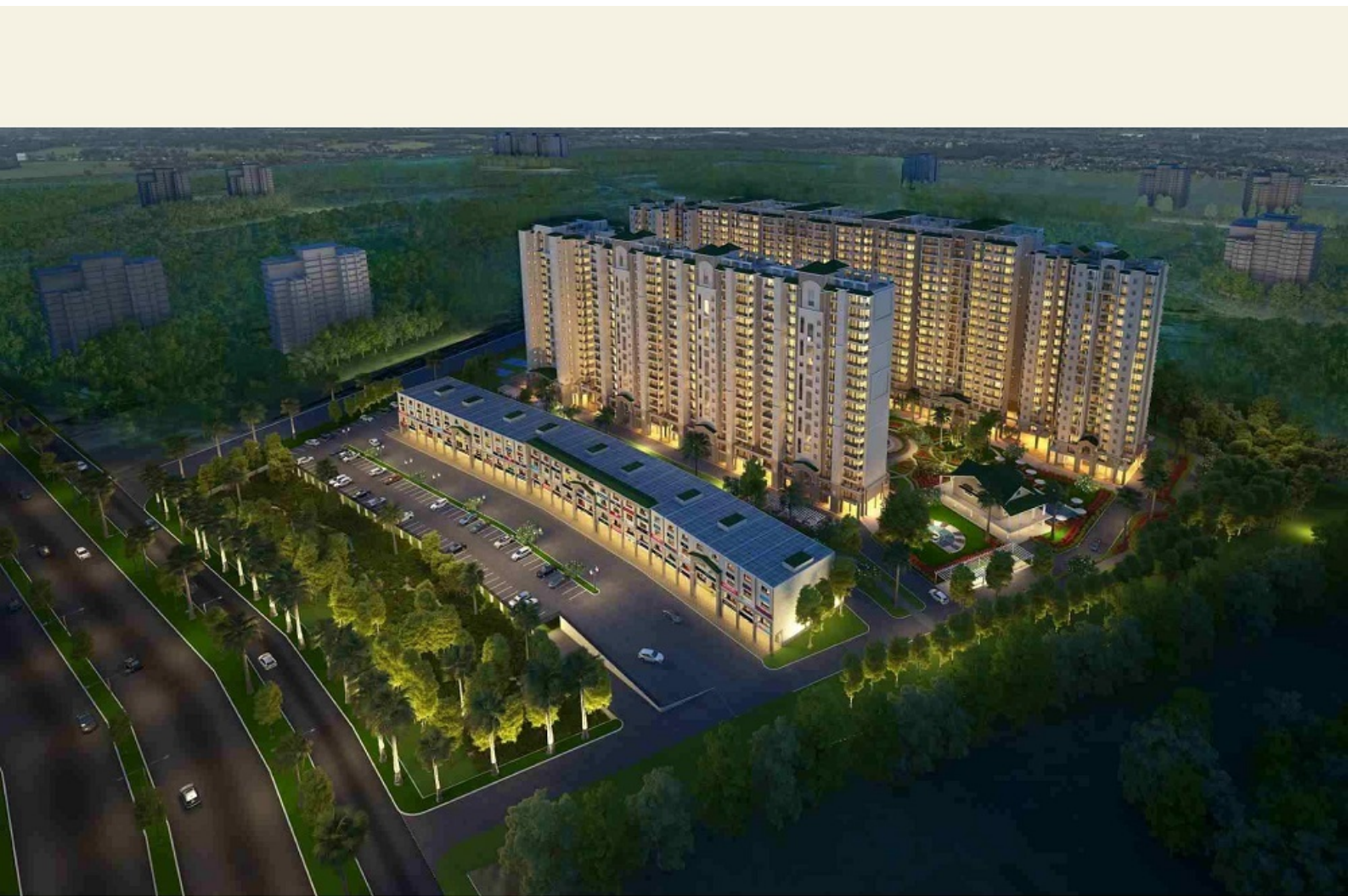
**GILLCO**  
**PARKHILLS**  
AIRPORT ROAD, MOHALI



## THERE IS NOTHING LIKE STAYING AT HOME FOR REAL COMFORT

Gilco Parkhills is 58ft + 19 storey high rise apartments, comprising of modern and super stylish architecture which appear to grow away from its site and is shaped to harmonize with its surroundings. Uniquely and beautifully designed, the exteriors fall nothing short of a marvel. The buildings are easily accessible and structurally sound. The clean and simple lines form a well built building perfectly in sync with its environment and surroundings. Like they say, There is nothing like staying at home for real comfort. Gilco Parkhills is the home where you would want to keep coming back to for joy, peace and comfort.







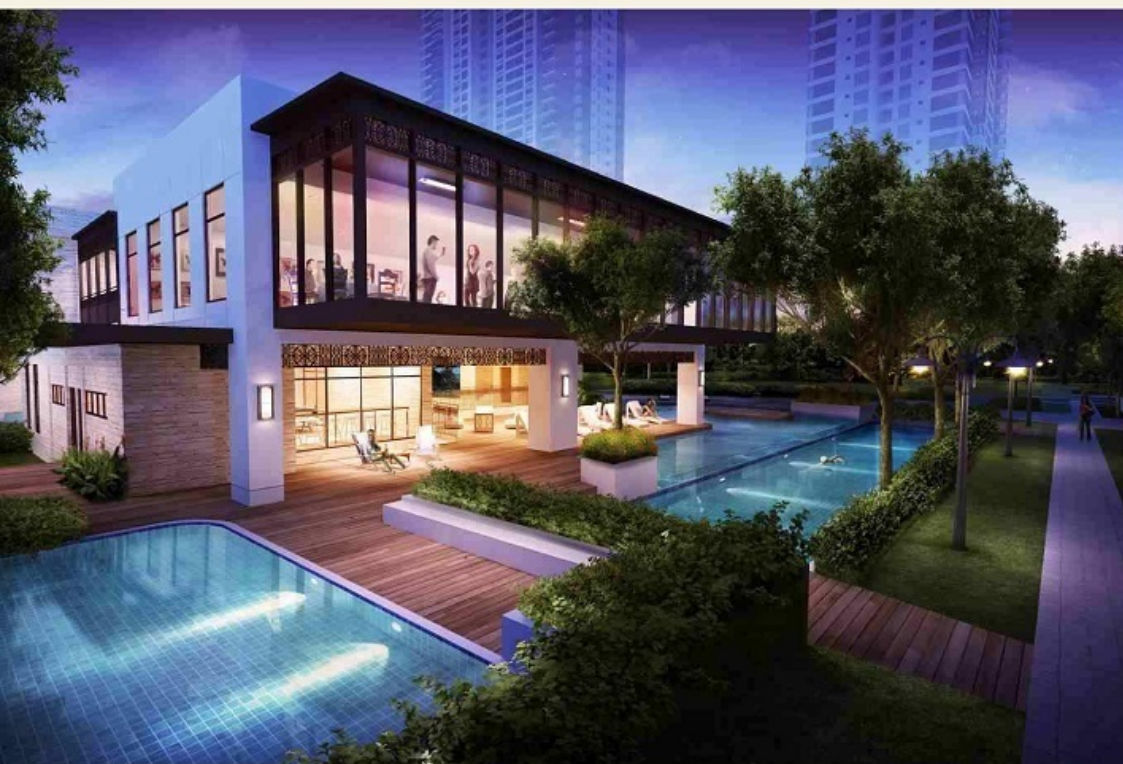
## LIVING SPACES THAT GO BEYOND

Our homes are more fluid, more open, more livable, and less restrained. We understand the necessity of a spacious space built with quality and love which not only is aesthetically appealing but also warm and welcoming. Every element is pleasing to the eye and nothing is complex or complicated to visualize. The bedrooms, The kitchen, The bathrooms and The living room are a delight and yes we can safely say that at Gilco Parkhills we have created living spaces that go beyond the ordinary.

- Semi Furnished Ultra Luxury AC Apartments
- Wooden Tiles in Master Bedroom
- Cable TV / Telephone / Broadband Ports in Living and Bedroom
- Kitchen Equipped with Sink & Chimney
- Provision for Water Purifier and Geyser in Kitchen
- 2 Lifts - 1 Passenger and 1 Service
- Video Door Phone
- 24 Hours Security with Intercom System
- Advance fire systems for safety







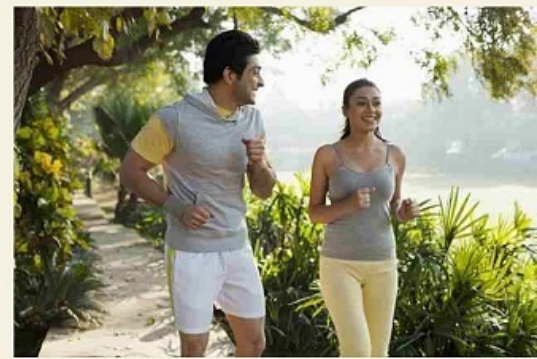
## SERENE SPACES FOR SPECIAL 'WE' TIME

Life is not just about work but also about a bit of fun and leisure. The Club at Ginko ParkHills is a perfect setting for socialising and creatively stimulating your minds. It is the ultimate space to relax and mingle. Appreciate opulent decor, fine dining and events at The Club, always abuzz with activity. Enjoy a splash in the pool, sweat it out in a fully equipped modern gym or simply hang out and talk. There's something for everyone to do at the Club, a place where everyone gets together as a community and creates that special 'WE' time.





- Elite Club House
- Swimming Pool
- Well-equipped Gymnasium
- Tennis Court
- Badminton Court
- Indoor Games
- Spa with Steam Sauna & Jacuzzi
- Fountains & Water Features
- Landscaped Garden with Gazebo
- Landscaped Outdoor Seating
- Party Hall
- Yoga & Meditation Spaces
- Children Play Area
- Jogging / Cycling Track





## GILCO TOWN SQUARE

SHOPPING & ENTERTAINMENT

Sometimes all you need is something to splurge on to feel good. Gillco Town Square gives you an opportunity to shop, have fun and enjoy quality entertainment with your family and friends. Satisfy your shopping appetite popular brand retail outlets and never be starved of quality entertainment and fine dining. Step out and sip in some light hearted amusement, only at the Gillco Town Square.





1  
km Frontage  
for High Visibility

2  
Highways  
Connectivity

15  
minutes to  
International Airport

3.5  
kms to  
Chandigarh

700  
residential units

24  
hours security  
and surveillance

19  
floors

6  
thousand sq.ft.  
club house

85  
percent  
open spaces

0  
km from  
North Country Mall

4  
stylish home layouts  
to choose from

7  
minutes from  
MAX Hospital

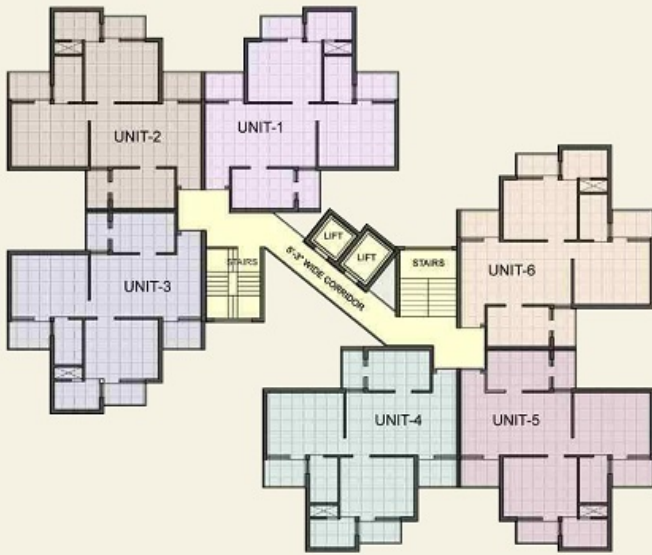


## MASTER PLAN

1. Entry
2. Exit
3. Town Square
4. Feature obelisk and floral landscape
5. Ramp up from Basement
6. Landscaped Central Park
7. Children's play area
8. Kids Pool
9. Waterfall
10. Water Fountain
11. Gazebo
12. Amphitheater
13. Interactive seating area
14. Look-out verandah
15. Yoga & Meditation
16. Club deck
17. Swimming pool
18. Badminton courts
19. Tennis court
20. Basketball Court
21. Surface parking
22. Private green
23. Spa & Jacuzzi
24. Jogging Track

# Layout Plan - 2 BHK + 2 Bath

Super Area - 1075 sq.ft.



Cluster Plan



Unit Plan

# Layout Plan - 3 BHK + 2 Bath

Super Area - 1420 sq.ft.



Cluster Plan



Unit Plan

## Layout Plan - 4 BHK + 4 BATH

Super Area - 2350 sq.ft.



Cluster Plan



Unit Plan

### Specifications for 2 / 3 / 4 BHK Apartments

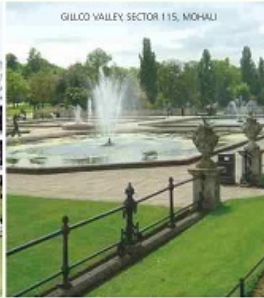
<b>Living/Dining Room</b>	Digital Polished Tiles Plaster & OBD/Plastic Emulsion Paint False Ceiling in Living & Dining area Plaster & OBD / Plastic Emulsion Paint in Rest.	<b>Accessories</b>	18mm BSL Interior Grade Particle Board 18mm BSL BWR Grade Plywood 18mm BSL Highgloss MDF Shutters Soft Close Drawer Systems Electric Chimney, Double Bowl/Single Bowl, Stainless Steel Sink, Chrome Plated Brass Fittings, Independent RO System.
<b>Bed Room</b>	Real wood Finish Tile in Master Bedroom, Double charged Vitrified Tiles in Remaining bedrooms and other areas. Plaster & OBD/Plastic Emulsion Paint False ceiling in 4BHK Master Bedroom only. Plaster & OBD/Plastic Emulsion Paint with POP corners	<b>Balcony</b>	Rustic Ceramic Tiles Rustic Ceramic Tiles Plaster & Weatherproof Exterior Paint M's Railing and Concrete/brick Columns
<b>Woodwork</b>	18mm BSL Interior Grade Particle Board 18mm BSL Highgloss MDF Shutters Soft Close Clip On O Crank Hinge	<b>Doors &amp; Windows</b>	Internal Doors: Hard Wood Choke/Jut & Pre Engineered Fabricated Panelled Teak Finish Doors External Doors/ Windows: Unplastered polyvinyl chloride (uPVC) with glass/ Wire mesh sliding shutters
<b>Toilets</b>	Antislip Ceramic Tiles Designer Glazed Ceramic Tiles (Up to False Ceiling level) Plaster & OBD/Plastic Emulsion Paint Chinaware - Kohler / American standard or equivalent CP Fittings - Grohe/ Kohler / Jaquar or equivalent - wall concealed fittings, Branded, Chrome plated, Towel Rail, Soap Dish	<b>Electrical</b>	Video Door Phone, AC points & internal fittings for only TV, Telephone and Broadband Internal Cabling, Copper Cables, Switches & Sockets etc.
<b>Kitchen</b>	Anti-Skid Ceramic Tiles Designer Ceramic Tiles above upto 2 ft heights Designer Ceramic Glazed Tiles (600mm High above counter) and Plaster & OBD/Plastic Emulsion Paint Plaster & OBD/Plastic Emulsion Paint Granite Stone	<b>Air Conditioner</b>	4BHK: One Split Ac 2 Ton in Living / Dining area 2 Split Acs 1.5 Ton in Three Bedrooms 3BHK & 3BHK: One Split Ac 2 Ton in Living / Dining area 2 Split Acs 1.5 Ton in 2 Bedrooms
<b>Ceiling</b>			
<b>Counter</b>			

Disclaimer - Specifications are indicative and are subject to change as decided by the company.





**GILCO**  
GILCO GROUP...  
COMMITMENT DELIVERED !





Gillco Group of Companies

Head Office: Sector 127, NH-21, Mohali.

Site Office: Airport Road, Sector 126, Mohali.

Tel: +91-99151-00097, 99887-00097

Email: [gillcovalley@gmail.com](mailto:gillcovalley@gmail.com)

[www.gillcoparkhills.com](http://www.gillcoparkhills.com)